



Assistance with documents and identity

Document examination

What we can do

The Forensic Laboratory at NIDC can help you in matters of verification and authentication of various types of ID-documents.

What you should do

If you need here and now guidance as to what to look for in a document, visa or stamp in order to verify that it is genuine, call our Specialist Document Examiners or send them a digital photo/a scan of the questioned item via email. They are able to assist you on a daily basis.

Our Specialist Document Examiners can be reached via email forwarded to nidc@nidc.dk or at our helpdesk +45 61 98 39 01 during office hours (8.00-16.00 PM CET).

If you require a formal written assessment from the NIDC Forensic Laboratory as to the authenticity of an ID-document, a request must be submitted through the form on the NIDC webpage. It can often be helpful to contact us by mail before initiating the process, so that we can plan it in the most expedient way.



Facial image comparisons

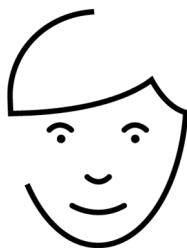
What we can do

If you are in doubt whether an identity document has been submitted by a legitimate applicant or an impostor, the expert team at the NIDC can conduct an examination of the facial images to assist in determining whether or not they are the same person.

What you should do

Upon suspicion of an impostor, take a digital photo of the facial image contained within the submitted identity document and retrieve the facial image captured, when the applicant's biometrics were recorded. Attach the original image files to an e-mail and submit the request for a facial image comparison to the NIDC via nidc@nidc.dk.

After the request has been submitted, you will be contacted by one of the centre's examiners to clarify the parameters of the facial image comparison.



Document content and issuance

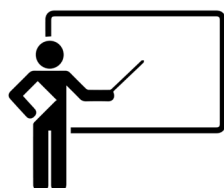
What we can do

Our analysts may provide information about the correct content of documents for the use of validation along with information about documents issuance procedures for the use of crosschecking information given by the applicants.

E.g. how to understand and read the document numbers, what are some of the prerequisites for legal issuance of a document and more.

What you should do

Contact the NIDC at nidc@nidc.dk and describe the case and your query and, if relevant, attach a digital photo of the document in question.



Training

The NIDC conducts training in verifying travel and civil documents and in imposter detection. On the NIDC webpage you can also learn more about ID documents in the e-learning tutorials regarding amongst others security elements in passports and ID-cards, background printing and the MRZ-code in travel documents.

For information regarding ID-related training at Danish embassies abroad, please contact nidc@nidc.dk