



Types of facial image comparison

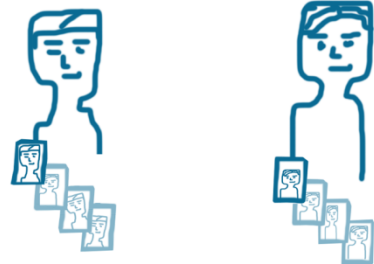
1:1

One-to-one comparison (Verification)

Investigates: Is this the same person?

Definition: A facial image comparison investigation is conducted on two or more facial images to verify whether or not the submitted facial images depict the same person or two different people.

Procedure: A case manager prepares the case for analysis and comparison by two case officers that conduct the comparison independently of each other, following a double blind procedure.



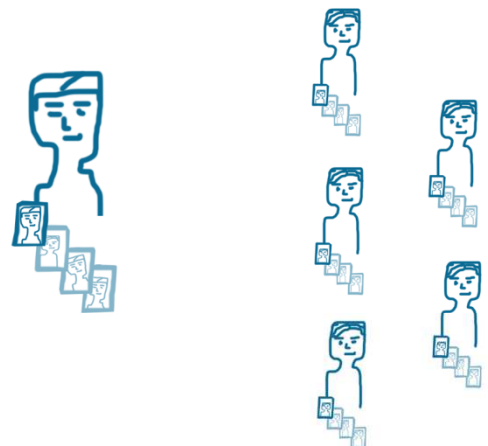
1:N

One-to-many (Identification)

Investigates: Is this person the same as one or more of these people?

Definition: A facial image comparison investigation is conducted on submitted facial images, which are compared to a gallery of facial images that depict different people, to determine whether the person on the submitted facial images is the same as any of the people in the gallery of facial images.

Procedure: A case manager prepares the case for analysis and comparison by two case officers that conduct the comparison independently of each other, following a double blind procedure. In practice several one-to-one comparisons are performed between the submitted facial images and the gallery of facial images, which depict different people.



N:N

Many-to-many (clustering)

Investigates: Do any of these images depict the same person?

Definition: A facial image comparison is conducted on several facial images that depict different persons with identities that have not been determined or are unknown, to investigate whether any of the facial images depict the same person.

Procedure: A case manager prepares the case for analysis and comparison by two case officers that conduct the comparison independently of each other, following a double blind procedure. In practice several one-to-many comparisons composed of several one-to-one comparisons are conducted.

